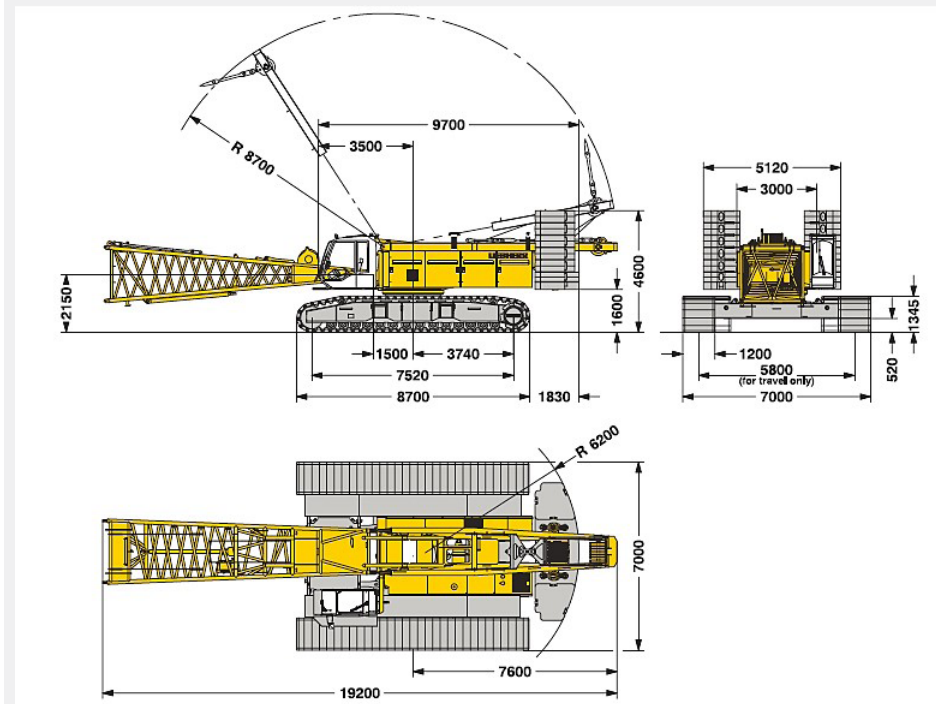


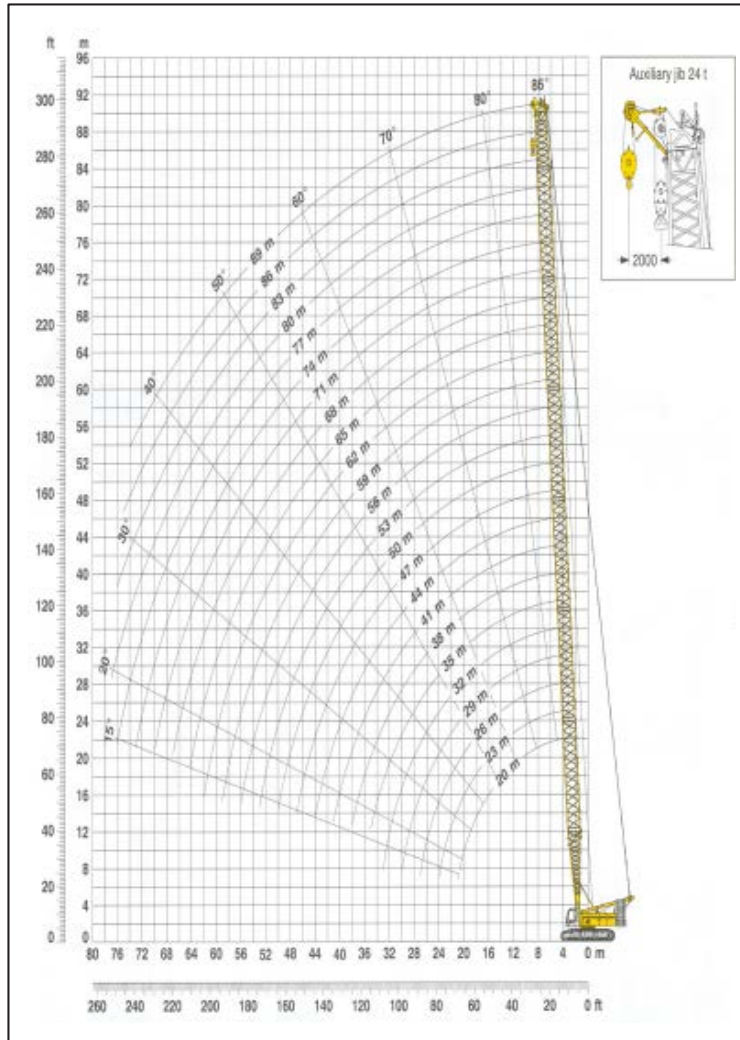


## Specifications

Maximum rated load at 4.0 m working radius	200 tons
Net weight (basic boom)	215 tons
Width of track shoes	1200 mm
Ground pressure	1,16 kg/cm <sup>2</sup>
Engine	326 hp
Winches	2 x 12 tons
Rope diameter	26 mm
Travel speed	0 - 1,6 km/h
Swing speed	0 - 3,0 rpm
Max. boom length	55 m
Max. jib length	17 m

## Dimensions - mm





JIS Rating		The rated loads shown don't exceed 78% of tipping loads with the machine on firm level ground												
Crane Boom in 360° Working Area														
Capacities in metric tons for boom lengths from 20 to 89 m														
Counterweight 81,5 t + carbody 36 t														
Boom length	20	26	32	38	44	50	56	62	68	74	80	86	89	
Radius l (m)	t	t	t	t	t	t	t	t	t	t	t	t	t	t
6.2						90.6								
7.0				129.1	106.8	89.2	79.4	63.5						
8.0			125.3	117.1	99.9	83.2	75.7	62.9	51.7	44.6				
9.0	119.2	116.7	110.3	103.8	88.0	77.8	71.6	59.8	50.0	44.2	37.0	30.0	26.4	
10.0	107.3	104.1	97.8	91.6	84.4	72.6	68.1	57.2	47.9	42.6	36.0	29.8	26.4	
12.0	86.8	84.7	80.5	76.7	73.1	65.0	63.4	53.2	43.7	40.1	33.3	27.8	24.8	
14.0	69.9	69.7	67.7	65.0	62.2	54.5	57.1	50.3	40.4	37.6	31.2	26.1	22.8	
16.0	58.2	58.2	58.2	56.2	53.9	51.1	53.2	45.5	37.9	35.0	29.4	24.4	21.3	
18.0	49.6	49.6	49.6	49.3	46.3	45.6	50.3	42.1	33.3	33.5	28.0	23.4	20.1	
20.0	42.9	43.1	43.0	42.8	42.2	40.6	39.0	37.5	31.7	31.7	26.4	22.6	19.1	
26.0		30.0	30.1	29.9	29.6	29.3	28.8	27.7	26.6	25.5	22.3	19.9	16.5	
32.0			22.4	22.3	22.1	21.7	21.4	21.1	20.4	19.5	18.7	17.4	14.9	
38.0				17.2	17.1	16.7	16.4	16.1	15.7	15.3	14.5	13.7	13.4	
44.0					13.4	13.2	12.9	12.5	12.2	11.8	11.3	10.7	10.4	
50.0						10.5	10.3	9.9	9.6	9.2	8.8	8.3	8.0	
55.0							8.5	8.1	7.8	7.4	7.1	6.6	6.4	
60.0								6.7	6.3	6.0	5.6	5.2	5.0	
65.0									5.1	4.7	4.4	4.0	3.8	
70.0										3.7	3.3	2.9	2.8	
75.0											2.4	2.0		