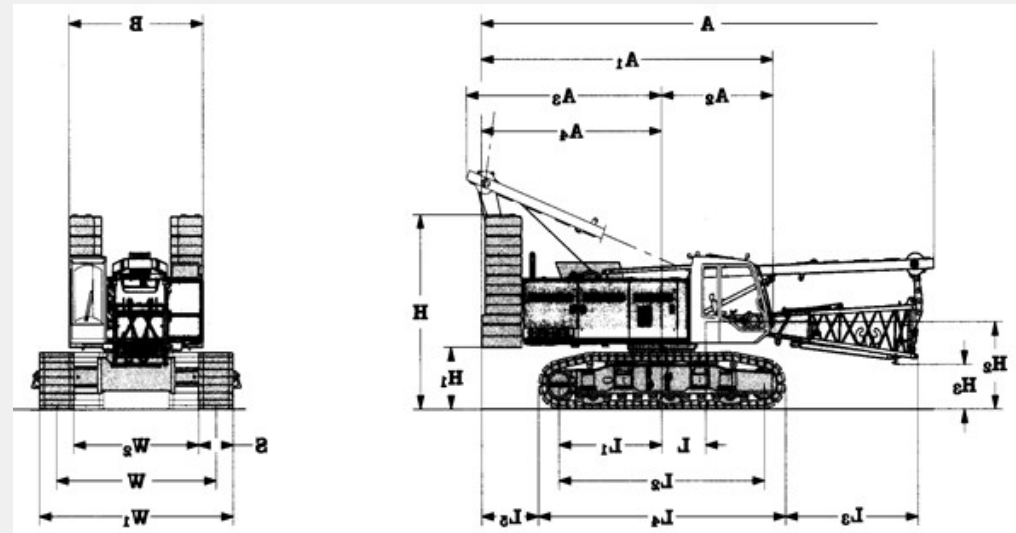




## Specifications

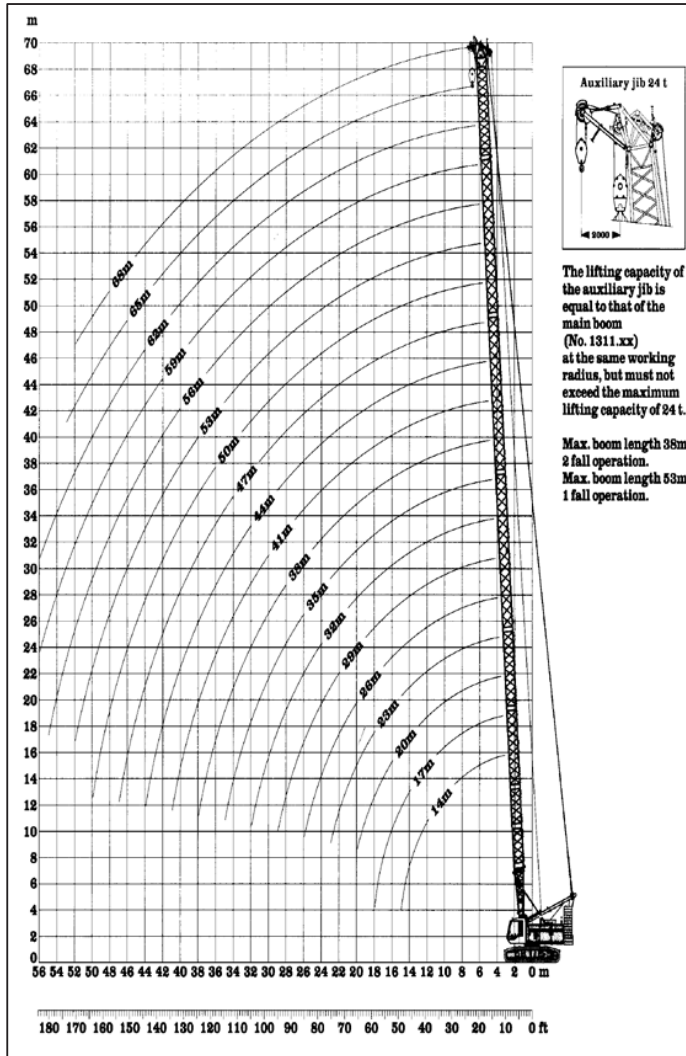
Maximum rated load at 4.0 m working radius	104 tons
Net weight (basic boom)	110 tons
Width of track shoes	900 mm
Ground pressure	1,14 kg/cm <sup>2</sup>
Engine	332 hp
Winches	2 x 12 tons
Rope diameter	26 mm
Travel speed	0 - 1,35 km/h
Swing speed	0 - 1,8 rpm
Max. boom length	44 m
Max. jib length	27 m

## Dimensions - mm



A: 11800	A3: 5100	H2: 1950	L2: 5360	S: 900
B: 3500	A4: 4700	H3: 1000	L3: 3460	W: 4150
A1: 7600	H: 4350	L: 1150	L4: 6400	W1: 5050
A2: 2900	H1: 1360	L1: 2680	L5: 1500	W2: 3500

# Kran 9,15 & 17 - Liebherr 1100 LR



JIS Rating	The rated loads shown don't exceed 78% of tipping loads with the machine on firm level ground																		
Crane Boom in 360° Working Area																			
Capacities in metric tons for boom lengths from 14 to 68 m										Counterweight 32,3 t + carbody 15 t									
Boom length	14	17	20	23	26	29	32	35	38	41	44	47	50	53	56	59	62	65	68
Radius i meter	t	t	t	t	t	t	t	t	t	t	t	t	t	t	t	t	t	t	t
3.1	104.5																		
4.0	103.7	101.1	94.1	88.0	82.8														
5.0	82.2	77.5	73.2	69.3	65.8	62.6	59.8	57.1	50.5	44.3									
6.0	65.8	62.6	59.7	57.0	54.6	52.3	50.2	48.2	46.4	42.7	35.4	31.0	27.7	24.6					
7.0	54.8	52.5	50.3	48.3	46.5	44.7	43.2	41.6	40.2	38.8	34.5	30.1	26.9	24.1	18.6	17.4	15.2	13.4	11.7
8.0	46.8	45.0	43.4	41.8	40.4	39.0	37.8	36.5	35.3	34.2	33.2	29.3	26.2	23.5	18.2	17.0	14.9	13.1	11.5
9.0	39.5	39.4	38.1	36.8	35.6	34.5	33.5	32.5	31.5	30.5	29.7	28.2	25.2	22.8	17.9	16.7	14.6	12.8	11.3
10.0	34.1	34.2	33.9	32.8	31.8	30.8	30.0	29.2	28.3	27.5	26.8	26.0	24.5	22.0	17.5	16.2	14.2	12.6	11.1
11.0	30.0	30.0	30.0	29.5	28.7	27.9	27.2	26.4	25.7	24.9	24.3	23.7	23.0	21.4	17.2	15.7	13.9	12.3	10.8
12.0	26.6	26.7	26.7	26.7	26.1	25.4	24.8	24.1	23.4	22.8	22.3	21.7	21.1	20.5	16.9	15.3	13.5	12.0	10.5
13.0	23.9	24.0	24.0	23.9	23.9	23.2	22.7	22.1	21.5	20.9	20.5	19.9	19.4	18.9	16.5	14.9	13.3	11.8	10.3
14.0	21.6	21.7	21.7	21.7	21.6	21.4	20.9	20.4	19.9	19.3	18.9	18.4	17.9	17.4	15.9	14.4	13.0	11.6	10.1
16.0		18.1	18.1	18.1	18.0	18.0	18.0	17.6	17.1	16.7	16.3	15.9	15.5	15.0	14.7	13.5	12.1	10.9	9.6
18.0			15.5	15.4	15.4	15.3	15.3	15.2	15.0	14.6	14.3	13.9	13.5	13.1	12.8	12.5	11.5	10.3	9.1
20.0			13.3	13.3	13.3	13.2	13.2	13.1	13.0	12.8	12.6	12.2	11.9	11.6	11.3	11.0	10.7	9.9	8.7
22.0				11.7	11.6	11.5	11.6	11.5	11.4	11.2	11.2	10.9	10.8	10.2	10.0	9.7	9.4	9.1	8.3
24.0					10.3	10.2	10.2	10.1	10.0	9.9	9.9	9.7	9.4	9.1	8.9	8.6	8.4	8.1	7.8
26.0					9.1	9.0	9.1	9.0	8.9	8.8	8.7	8.6	8.5	8.2	8.0	7.7	7.5	7.2	6.9
28.0						8.1	8.1	8.0	7.9	7.8	7.8	7.6	7.5	7.3	7.2	6.9	6.7	6.4	6.1
30.0							7.3	7.2	7.1	7.0	6.9	6.8	6.7	6.6	6.4	6.2	6.0	5.7	5.5
32.0							6.5	6.5	6.4	6.3	6.2	6.1	6.0	5.9	5.8	5.6	5.3	5.1	4.9
34.0								5.8	5.7	5.6	5.6	5.5	5.4	5.2	5.2	5.0	4.8	4.6	4.3
36.0									5.2	5.1	5.0	4.9	4.8	4.7	4.6	4.5	4.3	4.1	3.8
38.0										4.7	4.6	4.5	4.4	4.3	4.2	4.1	4.0	3.8	3.4
40.0											4.1	4.1	4.0	3.9	3.7	3.7	3.5	3.4	3.0
42.0												3.7	3.6	3.5	3.3	3.3	3.2	3.0	2.6
44.0													3.2	3.1	3.0	2.9	2.8	2.7	2.3
46.0														2.9	2.8	2.6	2.5	2.3	2.0
48.0															2.5	2.3	2.2	2.0	1.7
50.0																2.1	2.2	1.9	1.5
55.0																	1.4	1.3	1.0