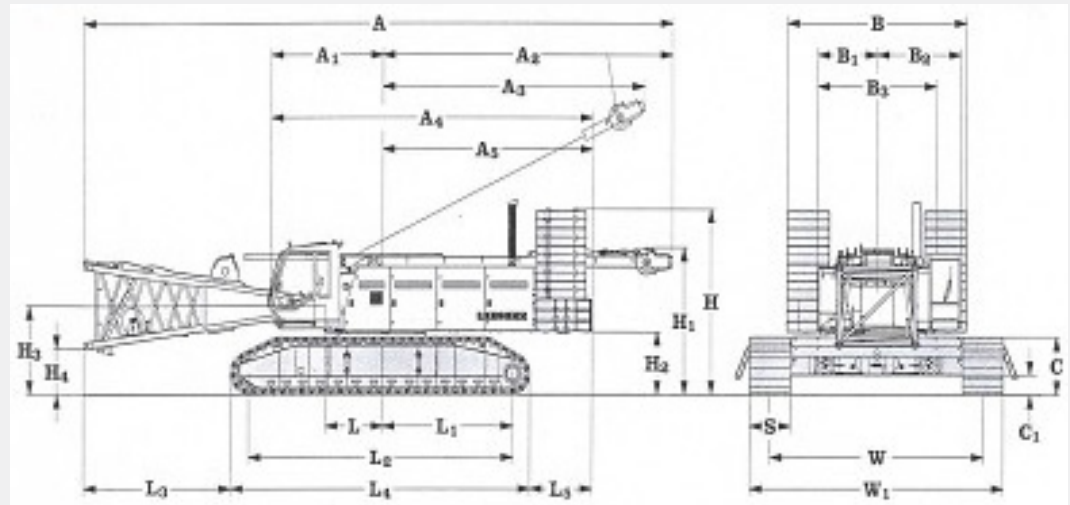




Specifications

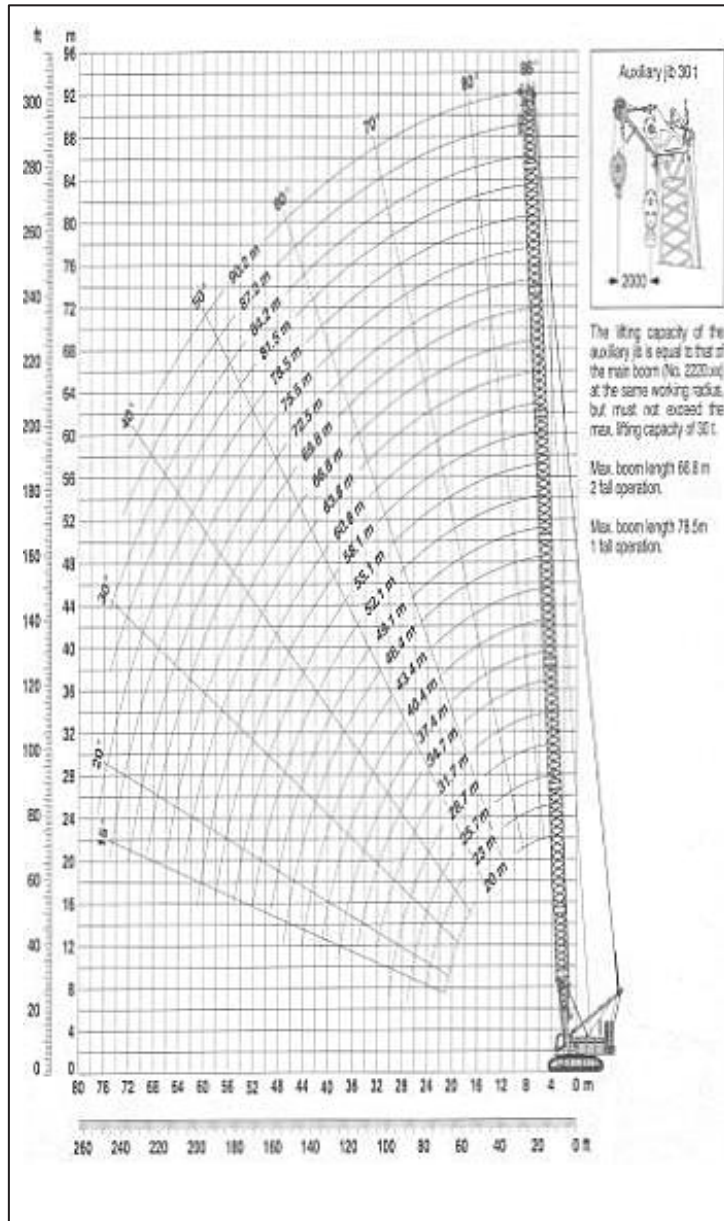
Maximum rated load at 5.0 m working radius	280 tons
Net weight (basic boom)	230 tons
Width of track shoes	1200 mm
Ground pressure	1,18 kg/cm ²
Engine	544 hp
Winches	2 x 16 tons
Rope diameter	28 mm
Travel speed	0 - 1,3 km/h
Swing speed	0 - 1,8 rpm
Max. boom length	70 m
Max. jib length	83 m

Dimensions - mm



A: 17400	A4: 3600	B2: 2500	H: 4700	H4: 1160	L3: 4360	W: 6300
A1: 3400	A5: 6200	B3: 3500	H1: 3840	L: 1700	L4: 9020	W1: 7500
A2: 8560	B: 5480	C: 1460	H2: 1600	L1: 3950	L5: 1625	
A3: 7750	B1: 1750	C1: 500	H3: 2250	L2: 7890	S: 1200	

Kran 10 - Liebherr LR1280



JIS Rating	The rated loads shown don't exceed 78% of tipping loads with the machine on firm level ground												
Crane Boom in 360° Working Area													
Capacities in metric tons for boom lengths from 17 to 80 m													
Boom length	20,0	25,7	31,7	37,4	43,4	49,1	55,1	60,8	68	72,5	78,5	84,2	90,2
Radius l (m)	t	t	t	t	t	t	t	t	t	t	t	t	t
4.3	275.8												
5	265.4	256.6											
6	231.8	225.5	205.4	188.7	173.6								
7	202.4	187.3	172.4	160.2	148.9	139.4	120.5						
8	171.9	159.6	148.4	139.0	130.2	122.6	115.4	96.7	80.9	65.1			
9	148.0	138.8	130.0	122.6	115.4	109.3	103.3	92.1	78.4	64.7	59.4	48.4	
10	130.0	122.7	115.5	109.5	103.5	98.4	93.4	88.9	74.9	61.6	58.3	47.9	40.9
12	102.0	99.2	94.2	89.9	85.5	81.8	78.0	74.6	63.3	57.2	56.0	45.6	39.1
14	81.7	82.0	79.2	75.9	72.5	69.6	66.6	63.9	61.1	52.1	51.9	43.5	37.7
16	67.7	68.0	67.8	65.6	62.7	60.3	57.8	55.6	53.3	48.4	48.4	41.5	35.9
18	57.5	57.9	57.7	57.4	55.0	53.0	50.9	49.0	47.0	44.4	43.3	39.9	34.5
20	49.6	50.1	49.9	49.7	48.9	47.1	45.2	43.6	41.8	40.2	38.3	37.1	33.3
22		44.0	43.8	43.6	43.3	42.2	40.6	39.1	37.5	36.1	34.6	33.2	30.6
24		39.0	38.8	38.7	38.3	38.0	36.6	35.3	33.8	32.5	31.1	29.9	28.3
26		34.8	34.8	34.6	34.2	33.9	33.3	32.0	30.7	29.5	28.2	27.0	25.8
28			31.3	31.2	30.8	30.5	30.1	29.2	28.0	26.8	25.6	24.5	23.4
30			28.3	28.3	27.9	27.6	27.1	26.8	25.6	24.5	23.4	22.3	21.2
32			25.7	25.8	25.4	25.1	24.6	24.3	23.5	22.5	21.4	20.4	19.3
34				23.5	23.2	22.9	22.4	22.1	21.6	20.6	19.6	18.6	17.6
36				21.6	21.3	21.0	20.5	20.1	19.7	19.0	18.0	17.1	16.1
38				19.8	19.5	19.3	18.8	18.4	17.9	17.5	16.5	15.6	14.7
40					18.0	17.7	17.3	16.9	16.4	16.0	15.2	14.3	13.4
44						15.1	14.7	14.3	13.8	13.4	12.9	12.1	11.2
48						12.9	12.5	12.2	11.7	11.3	10.7	10.2	9.3
50							11.6	11.2	10.7	10.3	9.8	9.3	8.5
55							9.5	9.2	8.7	8.3	7.8	7.3	6.6
60								7.4	7.0	6.6	6.1	5.7	5.1
65									5.6	5.2	4.7	4.3	3.7
70										4.0	3.5	3.0	2.5
75											2.4	2.0	1.5
80												1.1	